

jetNEXUS Virtual Load Balancer

For Fast, Scalable,
Resilient Applications



“

We were looking for a robust yet easy to use solution that would fit in with our virtualisation policy and ensure high availability for our email services. SDL

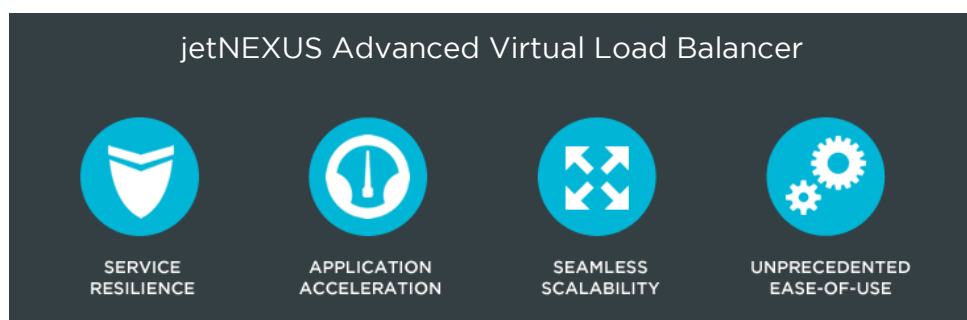
“

jetNEXUS is simple to use, extremely scalable and comes at the right price point, all of which make it a great fit for us. COLT

Mitigate the Risk of Downtime and Optimise Application Delivery

jetNEXUS load balancers improve the performance, scalability and reliability of applications for a superb end user experience.

Our powerful virtual load balancer is feature-rich yet cost-effective, giving you the comprehensive tool-set you need to overcome real-world application delivery challenges.



Powerful, Cost Effective Virtual Load Balancing

jetNEXUS is available as a Virtual Appliance for VMware, Hyper-V and Citrix XenServer, eliminating the need for dedicated hardware, decreasing operating costs and reducing deployment time.



About jetNEXUS

We are passionate about building good value, high performing load balancers that are incredibly easy to use and deliver real results.

We take great pride in supporting our load balancing deployments around the world.

Improve the Performance of your Business Applications

jetNEXUS has experience across a broad range of applications and an understanding of their unique requirements. From household names such as MS Exchange and Lync, to self service websites and browser based services, through to specialist applications like Electronic Patient Record Systems or E-Learning platforms like Moodle and Blackboard.



Download a free trial of the jetNEXUS ALB-X VA software here

jetNEXUS Virtual Load Balancer

For Fast, Scalable,
Resilient Applications



“

Having technically reviewed the solutions available in the market place, we felt that jetNEXUS hit all the functionality of the big players, at a very reasonable price point for the feature set available.

UNITE

Powerful Features for Optimised Application Delivery

Our ethos is simple; deliver the features that customers need at a fair price. We don't bury our features in impenetrable code, we present them simply and effectively to ensure our clients have a feature-rich load balancer that they can actually use.



Pre-Authentication



Layer 4-7 Load Balancing



Server Health-Checking



Reverse Proxy



SSL Offload



Content Caching



Automatic Configuration



Web Application Firewall



Compression



Web Acceleration



Traffic Management



Clustering



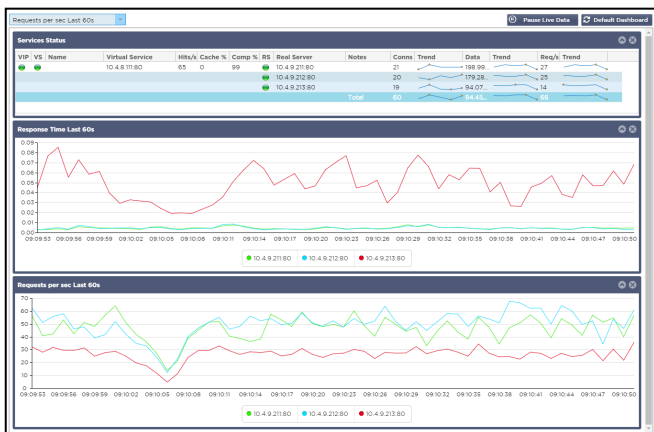
Intuitive GUI



Unprecedented Ease-of-Use

Easy to Deploy, Simple to Manage, Straight Forward to Support

Configuring jetNEXUS Load Balancers is a fast, painless experience for experts and novices alike and day-to-day management tasks are a breeze.



The screenshot displays the 'Virtual Services' section of the jetNEXUS dashboard. It includes a table for 'Virtual Services' with columns for Name, VIP, RS, Enabled, IP Address, Subnet Mask / Prefix, Port, Service Name, and Service Type. Below this is a table for 'Real Servers' with columns for Group Name, Server Group, Address, Port, Weight, Calculated Weight, and Notes. The interface also shows a sidebar with navigation options like Services, App Store, Library, View, System, Advanced, and Help.

- Configure in minutes
- Intuitive user interface
- Real time status updates
- Drag and drop functionality
- GUI wizard & auto-complete
- Simple navigation
- Custom dashboards
- Configurable widgets
- Historical graphing

“jetNEXUS is extremely intuitive, requiring very little expert knowledge to get up and running yet there are a host of advanced features to enhance service delivery.” digdat™

Introducing User Central

[jetNEXUS User Central](#) is a one-stop knowledge base for everything jetNEXUS. Discover how to deploy and configure jetNEXUS in minutes & troubleshoot support issues with ease.

Tech Specs	ALB-X VA
CPU	Min 2 vCPU
Memory	Min 2 GB
Virtual Network Interface	Up to 8
Power Consumption	N/A
HTTP Max Throughput	3 Gbps / 6 Gbps / Unlimited
Layer 7—HTTP Requests Per Second	Not limited by licence
SSL Transactions Per Second*	Not limited by licence

*With hardware acceleration ** Not limited by licence

Features

SERVER LOAD BALANCING

- Layer 4 - 7 Load Balancing
- Layer 7 Application Persistence (aka. Persistence / Sticky Sessions / Cookie Based)
- Manual Server Weighting
- Automatic Server Weighting
- Reverse Proxy
- UDP Full Proxy
- Layer 7 Content Switching
- Active - Passive High Availability Mode
- Active - Active High Availability Mode
- Cross Data Centre Redundancy
- N+X Clustering
- Connection Draining
- Standby Server (aka Server of Last Resort)

LOAD BALANCING METHODS

- Fastest Server
- Least Connections
- Round Robin
- IP Bound
- IP List Based

- Cookie Based
- Customisable Cookie
- Classic ASP Session Cookie
- ASP.NET Session Cookie
- JSP Session Cookie
- JAX-WS Session Cookie
- PHP Session Cookie
- Weighted Round Robin
- Weighted Least Connections

SERVER HEALTH CHECKING

- Customisable Health Checks
- Simple HTTP
- Full HTTP (Layer 7)
- TCP Connect
- Out of Band Health Check
- DICOM
- RDP
- Ping
- Multiple Server Health Checks Per Service
- New HTTPS Health Check
- Redis Health Check (via App Store)
- DNS Health Check

jetNEXUS Load Balancer

For Fast, Scalable,
Resilient Applications



Upload Custom Health Checks
Extra Setting for Custom Health Checks

NETWORKING

IPv6 Support
IPv6 > IPv4 Proxy
VLAN Support
Single or Multi Interface Configuration
Choice of Interfaces (from 4x1GbE up to 4x10GbE or 8x1GbE)
Support for S-NAT, NAT and PAT
Static Routing With Default Gateway
Unrestricted Interfaces (*Virtual*)
High-Performance Virtual Network Drives (*Virtual*)
Multiple DNS Server Support

LINK INTERFACE BONDING

802.3ad
Round Robin
Active / Passive
Broadcast
Adaptive
Transmit
Balance-XOR

CONNECTIVITY METHODS

Reverse Proxy
High Performance Layer 4 Load Balancing
Direct Server Return

SSL

High-Performance, Unrestricted SSL Offload
Easy-to-Use SSL Management
AES Hardware SSL Acceleration
SSL Pass-Through
SSL Re-Encryption
Certificate Signing Request (CSR) Generation and Renewal
Simple Certificate Import / Export inc PKCS12
Self-Signed Certificate Creation
Support For Multiple Keys Inc: 1024, 2048, 4096
Intermediate Certificate Support
Support for Server Alternative Names
Support for Wildcard SSL Certificates
SSL Certificate Chaining
Support for TLS 1.2
Customisable Ciphers
Full Support for Server Name Indication (SNI)
Multiple Certificates Per Service for SNI

SECURITY

Web Application Firewall (Additional Licence)
Pre-Authentication
NTLM / Basic Support
Form or Basic Authentication
Single Sign On (SSO)
Microsoft TMG Replacement
Upload Custom Forms From GUI
Custom Login with Configurable Welcome Message
Authentication Protocol LDAPS Servers
Security Logging
Login Timeout
Multiple Conditions

TRAFFIC MANAGEMENT (flightPATH)

HTTP / HTTPS Traffic Manipulation
Intuitive, Simple To Use
Drag & Drop Rule Builder
Layer 7 Content Switching
Dynamic Routing
Content Filtering
Fully Customisable / Configurable
Pre-Defined Rule Base
Log and Alert
Geo Location
Selectable, Simple Match Conditions (inc does / does not: 'start with', 'end with', 'contain', 'equals') or
Powerful Regular Expression Engine
Extract Response Cookie Value

Examples:

Block IPs / Networks
Redirect to Secure Website
Rewrite URLs
Replace Sensitive Info (Blank Credit Card Details)
Browser Detection
Device Detection
Body Rewrite
Prevent SQL Injections
Prevent Cross-Site Scripting
Add Google Analytics
Redirect User Based on Country
Certified for Key Applications

CLOUD BASED SERVICES ***

Secure Interface From ALB-X to Cloud Services
Check Cloud & Download for Software Updates
Check Cloud for Support
Check Cloud for Licence Information
Check Cloud for New Security Rules



ACCELERATION

Compression

- Dynamic HTTP Compression
- Configurable Rule Base

Caching

- RAM-Based Caching with Disc Backup
- Automatic and Configurable Client-Side Caching
- Multiple Caching Profiles
- Auto-Detect and Prioritise Popular Content
- Simple Editing of Cache Rulebase
- Fully Configurable via GUI

Connection Management

- Connection Pooling / Multiplexing
- Connection Limiting
- Customisable Server Too Busy Page

MANAGEMENT & REPORTING

GUI and Configuration

- Secure Web-Based GUI
- Customisable Dashboard
- Configurable Widgets
- Automatic jetNEXUS Device Discovery
- jetPACK Application Templates (Auto-configuration)
- Clone Services
- Auto Complete
- Support for Slash Notation
- Configuration Back Up

Software Updates

- Check Cloud Service for Software Updates
- Encrypted Software Updates
- Simple Software Update Via GUI

Management and Monitoring

- Selectable SSL Certificate & Secure Port
- Full SNMP Monitoring (V1,2 &3)
- Command Line Interface (CLI)
- Email Alerting
- Real Time Stats
- Status Page with Live Individual Server Connections
- Historical Graphing
- Server Response Time Graphing
- Additional Services CPU Management
- Layer 4 Transaction Logs
- Remote Syslog Server
- Client IP x forwarding (X-Forwarded-For)
- Automatic Remote W3C Log Storage
- Secure SSH & HTTPS for Remote Access Admin
- Online User Central Support