

# HPE Application Delivery Controller

## for fast, scalable and reliable load balancing

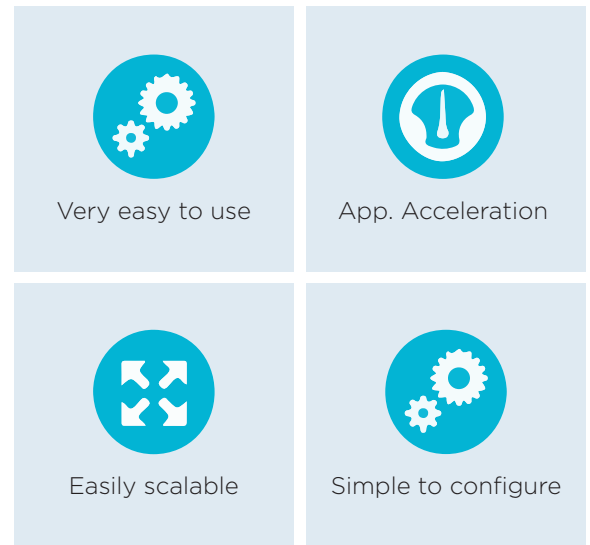


Powered by Edgenexus

The HPE Application Delivery Controller is powered by Edgenexus Application delivery (EdgeADC) technology, and delivers high grade, reliable and scalable Layer 4 and Layer 7 load balancing to SME and large enterprise alike.

The advanced functionality is aided and complimented by an easy-to-use interface that is fully web browser driven, ensuring that usage is kept 100% free of coding and hassle-free.

Married with HPE's superb hardware and excellent on-site warranties, the EdgeADC technology offers the very best in value for money, allowing you to ensure safe, accurate and reliable delivery of applications and data to your users.



## FEATURES



Unprecedented Ease of Use



Global Server Load Balancing



Web Acceleration



Intuitive GUI



Automatic Configuration



Pre-Authentication & Single Sign-On



Compression & Caching



Reverse Proxy



Instant Clustering



SSL Offload & Re-Encryption



Server Health Checking



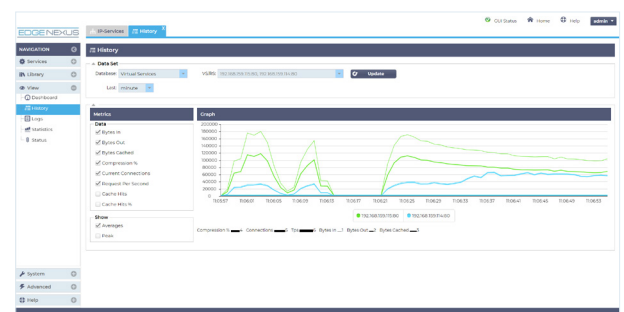
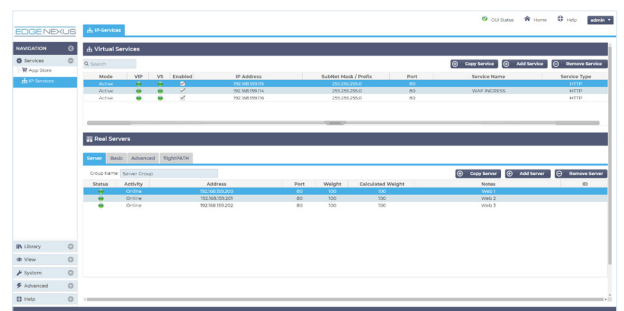
flightPATH Traffic Management



Layer 4/7 Load Balancing



Web Application Firewall (WAF)



EDGE NEXUS

[www.edgenexus.io](http://www.edgenexus.io)

UK: +44 808 1645876

USA: (866) 376-0175



**Hewlett Packard Enterprise**

Certified for ProLiant Servers

# HPE Application Delivery Controller

for fast, scalable and reliable load balancing



Powered by Edgenexus

## THE HPE ~ EDGENEXUS PARTNERSHIP

The partnership between HPE and Edgenexus has worked to deliver the very best technology in hardware, teamed with the innovative, and advanced load balancing capabilities of the EdgeADC Application Delivery Controller.

Combining the high performance, reliability and ease of use of both platforms, ensures that customers get the best of both worlds, in terms of power, resilience, affordability combined with HPE's unrivalled global service and support.

## HOW TO BUY

The HPE Application Delivery Controller, or HPE-ADC is available to buy through your local HPE partner, or also directly from Edgenexus in Europe and USA.

### Buying through an HPE Partner

This is one of the most convenient ways of purchasing the HPE-ADC. Just choose the HPE ProLiant hardware that best suits the requirements, and ask your HPE partner to order the special EdgeADC for HPE ISO. Your partner can then image the server hardware and deliver it to you. Hardware support is from HPE and software support is provided directly from Edgenexus.



### Buying directly from Edgenexus

Another way of purchasing an HPE-ADC should you wish is to buy it directly from Edgenexus. As an HPE OEM, Edgenexus can offer a number of server hardware options available with CPU specifications beginning from four cores, right up to 12 cores. Should you wish to have an HPE-ADC with even more power, Edgenexus can accommodate your special needs.

## WHAT HPE HARDWARE IS SUPPORTED?

Together with HPE's superb technical teams, Edgenexus engineers have worked to support the Ethernet and fiber interfaces that are supplied by HPE, together with SSL encryption card technology we felt delivers both performance and best value.

So you can rest assured that the HPE-ADC can slip into your racks and perform to the very best in delivery standards.

**EDGE NEXUS**

[www.edgenexus.io](http://www.edgenexus.io)

UK: +44 808 1645876

USA: (866) 376-0175

**Hewlett Packard  
Enterprise**  
Certified for ProLiant Servers

# HPE Application Delivery Controller

for fast, scalable and reliable load balancing

## TECHNICAL BRIEF

Powered by Edgenexus

### STANDARD HPE-ADC MODELS

The table below indicates standard models of the HPE-ADC that are available from your HPE partner.

Tech Specs	H1 / HPE DL180	H2 / HPE DL360	H3 / HPE DL360	H4 / HPE DL360/380
Chassis	1U Half Depth	1U Full Depth	1U Full Depth	1U Full Depth
CPU Cores	4	6	8	12
- Hyper Threading	Yes	Yes	Yes	Yes
- Threads	8	12	16	24
- Processor Base Frequency	3GHz	3.40GHz	3.20GHz	3.00GHz
- Max Turbo Frequency	3.50 GHz	3.70 GHz	3.60 GHz	3.50 GHz
- Cache	15 MB SmartCache	20 MB SmartCache	25 MB SmartCache	30 MB SmartCache
Power Supplies	Dual Hot Swap	Dual Hot Swap	Dual Hot Swap	Dual Hot Swap
Memory	8 GB	16 GB	16 GB	16 GB - 384 GB
Network Interface	2 x 1 GbE	4 x 1 GbE	4 x 1 GbE & 2 x 10 GbE	4 x 1 GbE & 2 x 10 GbE
Storage	80 GB SSD	120 GB SSD	120 GB SSD	180 GB SSD
Power Consumption	70W Peak	148W Peak	148W Peak	148W Peak
Power Redundancy	No	Yes	Yes	Yes
Max Throughput	3 Gbps	6 Gbps	10 Gbps	20 Gbps
Layer 7 - HTTP RPS	253K approx	1.3M approx	2.1M approx	4M approx
SSL Transactions Per Second*	3k tps approx	6k tps approx	11k tps approx	14k tps approx

\* SSL transactions depend on the number of processors, cores and inclusion of ssl coding cards

### BENEFITS OF BUYING THE HPE-ADC

There are many load balancers on the market, some of which are very expensive, and some even free. But what makes the HPE-ADC different from the rest is the quality of hardware and support provided by HPE, and the ease of use and power of the EdgeADC software.

- Best-of- breed integrated solution
- All HPE Stack
- Powerful solution for the most demanding workloads
- Outstanding performance for the Enterprise
- Industry standard servers to guarantee resiliency for mission critical applications

### HPE-ADC MAIN FEATURES

- Install and configure in minutes
- Highly intuitive web user interface
- Drag and drop functionality
- GUI wizard with auto-complete
- In-built and custom health checks
- GUI driven flightPATH traffic management rules - 100% No coding
- Multiple predefined load balancing / persistence policies
- Layer 4 and Layer 7
- SSL Passthrough/Offload/Re-encryption with SNI
- Reverse Proxy/DSR/Gateway modes
- EdgeSILO Microservices Containers for internal apps hosting - Cisco Duo, Let's Encrypt SSL, Dell-ECS, EdgeDNS and more
- WAF and GSLB options
- EdgeAUTH - pre-authentication and SSO

For the full specifications please download the Edgenexus datasheet.

**EDGE NEXUS**

[www.edgenexus.io](http://www.edgenexus.io)

UK: +44 808 1645876

USA: (866) 376-0175



**Hewlett Packard  
Enterprise**

Certified for Proliant Servers